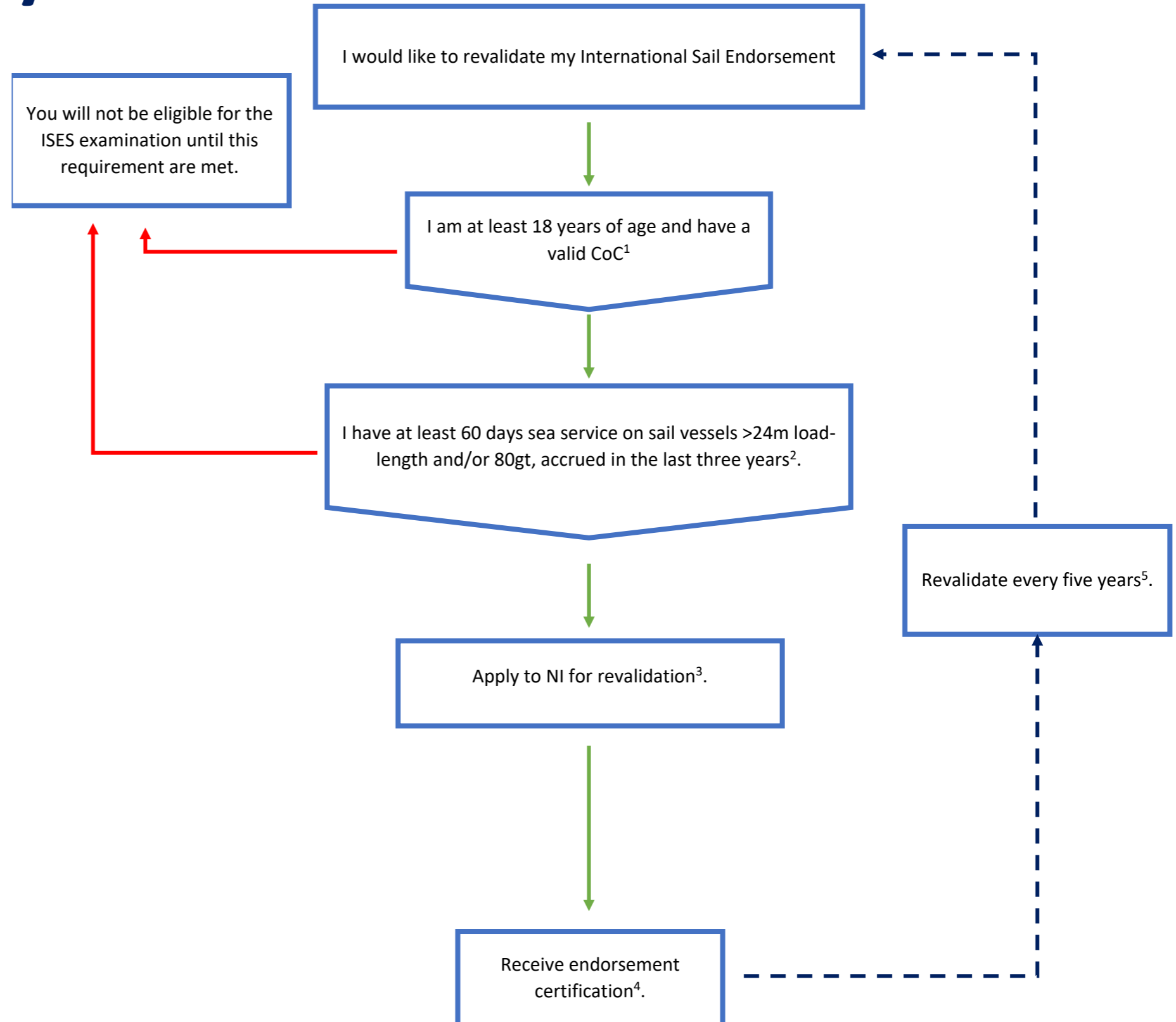


Revalidation Pathway

If your International Sail Endorsement is due for renewal you will need to follow the adjacent flowchart to revalidate your Sail Endorsement.

Fees for verification of sea service and certification are detailed in the 'fees' section of the handbook.



¹ The International Maritime Organization's (IMO) website holds a list of national authorities maintaining registers of certificates and endorsement. The list can be found [here](#).

The IMO website further allows you to verify your Certificate of Competency (COC), you can do this using this [link](#).

² A day of service means a period of not less than 8 hours in any 24 hour period engaged in duties pertinent to the operation of a vessel underway. A vessel underway is a vessel not made fast to the shore, at anchor or aground. Sea service accrued to obtain a certificate of competency may be counted.

³ When submitting an application for revalidation, you will need to submit evidence of at least 60 days sea service on a sale vessel >24m load-line length and/or 80gt, accrued in the last three years.

⁴ The International Sail Endorsement is appended to a certificate of competency and remains valid only for so long as the certificate of competency is valid.

⁵ The International Sail endorsement is revalidated every five years, when wanting to revalidate you will need to go ahead and follow the Revalidation Pathway.